



# DGAT2L6 Polyclonal Antibody

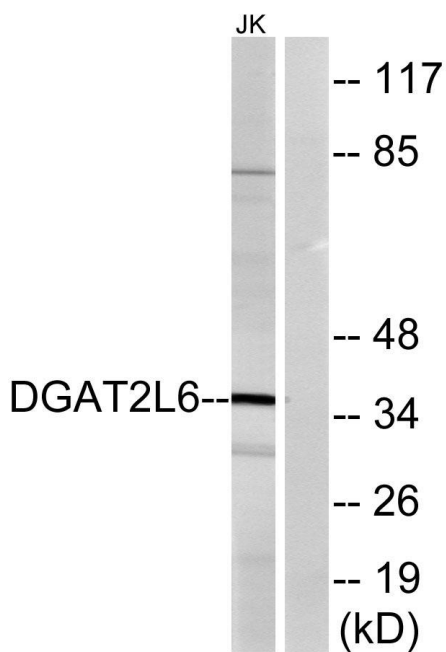
<b>Catalog No</b>	YP-Ab-02615
<b>Isotype</b>	IgG
<b>Reactivity</b>	Human;Rat;Mouse;
<b>Applications</b>	WB;ELISA
<b>Gene Name</b>	DGAT2L6
<b>Protein Name</b>	Diacylglycerol O-acyltransferase 2-like protein 6
<b>Immunogen</b>	The antiserum was produced against synthesized peptide derived from human DGAT2L6. AA range:271-320
<b>Specificity</b>	DGAT2L6 Polyclonal Antibody detects endogenous levels of DGAT2L6 protein.
<b>Formulation</b>	Liquid in PBS containing 50% glycerol, 0.5% BSA and 0.02% sodium azide.
<b>Source</b>	Polyclonal, Rabbit,IgG
<b>Purification</b>	The antibody was affinity-purified from rabbit antiserum by affinity-chromatography using epitope-specific immunogen.
<b>Dilution</b>	Western Blot: 1/500 - 1/2000. ELISA: 1/10000. Not yet tested in other applications.
<b>Concentration</b>	1 mg/ml
<b>Purity</b>	≥90%
<b>Storage Stability</b>	-20°C/1 year
<b>Synonyms</b>	DGAT2L6; DC3; Diacylglycerol O-acyltransferase 2-like protein 6; Diacylglycerol O-acyltransferase candidate 3; hDC3
<b>Observed Band</b>	36kD
<b>Cell Pathway</b>	Endoplasmic reticulum membrane; Multi-pass membrane protein .
<b>Tissue Specificity</b>	Expressed in all tissues tested except pancreas.
<b>Function</b>	function:Probable acyltransferase uses fatty acyl-CoA as substrate (By similarity). Has no wax synthase activity to produce wax esters.,similarity:Belongs to the diacylglycerol acyltransferase family.,tissue specificity:Expressed in all tissues tested except pancreas.,
<b>Background</b>	This gene is a member of the diacylglycerol acyltransferase 2 family. The encoded protein is a putative acyltransferase and is most likely involved in the synthesis of di- or triacylglycerol, however its substrate specificity is currently unknown. [provided by RefSeq, Feb 2015],
<b>matters needing attention</b>	Avoid repeated freezing and thawing!



**Usage suggestions**

This product can be used in immunological reaction related experiments. For more information, please consult technical personnel.

**Products Images**



Western blot analysis of lysates from Jurkat cells, using DGAT2L6 Antibody. The lane on the right is blocked with the synthesized peptide.